



DT Research

Cloud Computing Appliances/ Thin Clients

The Ultimate Cloud Computing Solution

The DT Research Cloud Computing Appliances/ Thin Clients combine powerful computing, low power consumption and fanless operation with the AMD Fusion™ Dual Core CPUs and AMD Hudson GPUs, integrated into compact and robust enclosures for flexibility in location and application. The compact design of the DT Research Cloud Computing Appliances/ Thin Clients is complemented by 4 USB, 2 serial ports, audio and display ports with available wireless option. The integrated optional smart card reader enables enhanced security, and a selection of operating software offers optimal user experience for Internet/ Intranet access and server-based computing.

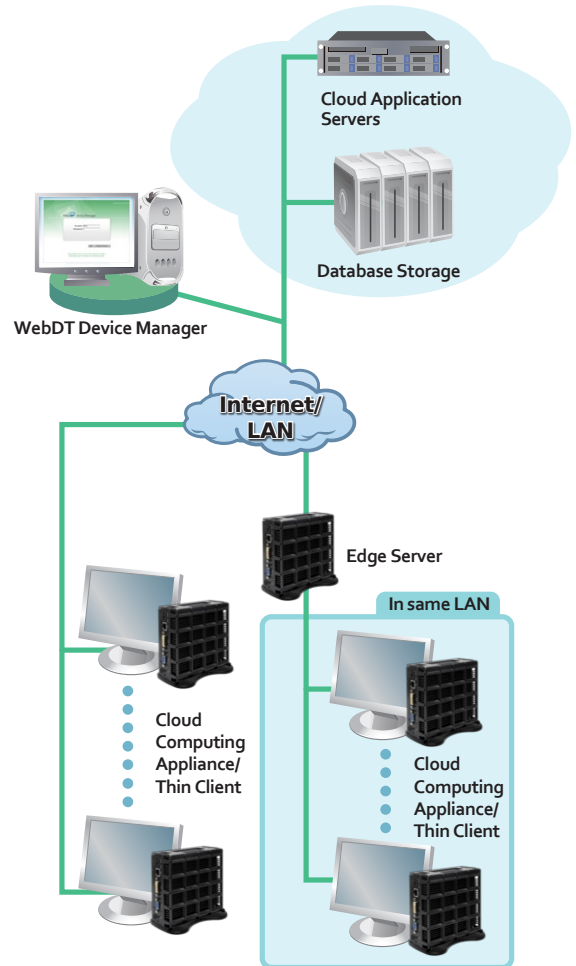
• Features

- High performance, low power consumption
- Robust and compact design; fanless without moving parts
- Customizable for OS/BIOS
- Device Management software
- WLAN communication
- 4 USB, 2 COM ports, audio/ video ports
- VESA mountable
- Optional Smart Card Reader

• Applications

The DT Research Cloud Computing Appliances/ Thin Clients are ideal for the following applications:

- | | |
|------------------------|-------------------------|
| • Government | • Transportation |
| • Finance | • Education |
| • Manufacturing | • Healthcare |

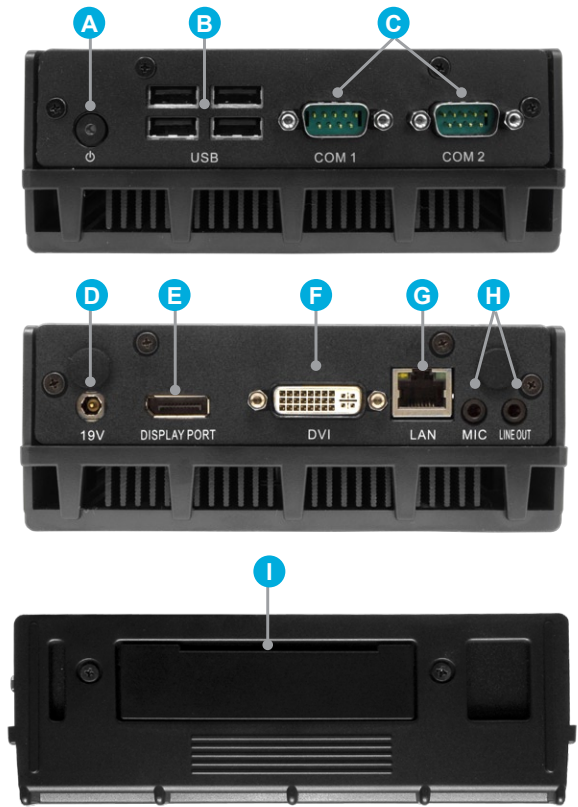


• Specifications

System	CPU	AMD Fusion Dual Core, 1.6GHz
	GPU	AMD Hudson
	RAM	2GB
	Storage	8GB, 32GB, or 64GB Flash
	Operating System	Linux, Windows® XP Embedded or Embedded Standard 7
	Resolution	Up to 1920 x 1080
	Network Interface	10/ 100/ 1000MB BaseT LAN; Wi-Fi 802.11a/b/g/n (optional)
I/O Ports	Smart Card Reader	Optional; Ominkey smart card reader (USB interface)
	DVI	1
	DisplayPort++	1
	Audio Jack	3.5mm phone jack x 2
	USB Ports	4 (2.0)
	Serial/ COM	2
	Ethernet	RJ45 connector for Ethernet x 1
Mechanical and Environmental	DC-in	1; 1.7 mm DC in
	Fan/Fanless	Fanless
	AC/DC Adapter	Input: 100 – 240V AC; Output: 19V DC
	Enclosure	Aluminum + steel
	Dimensions (H x W x D)	2.16 x 5.82 x 6.5 in/ 55 x 148 x 165.1 mm
	Weight	2.9 lbs/ 1316 g
	Regulatory	FCC Class B, CE, C-Tick, RoHS compliant
	VESA Mounting Bracket	Included
	Temperature	Operation: 0°C – 40°C; Storage: -20°C – 60°C
Humidity	0% – 90% non-condensing	

* Specifications subject to change without notice.

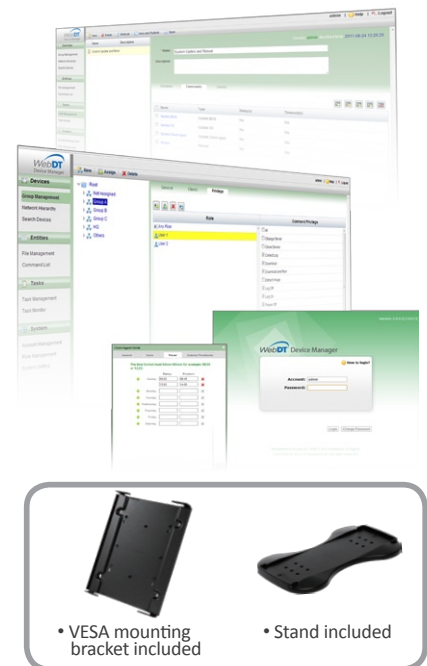
• I/O Ports



- A** Power button
- B** USB 2.0 (4)
- C** RS232 COM port (2)
- D** DC in
- E** DisplayPort++
- F** DVI port
- G** Ethernet port
- H** Audio jacks
- I** Smart Card Reader (optional)

• WebDT Device Manager Features & Benefits

- Update OS/BIOS/ Client Agent via FTP, USB, or a network drive (with security function to avoid communication errors for OS image updates)
- Client devices can be registered to server automatically within same LAN
- File transmission between server and clients
- Remotely execute applications at client side
- Remotely power on/ off clients via RTC (Real-time Clock) and WOL (Wake-on-LAN)
- Manage device asset info, including hardware, software & external peripherals
- Assign tasks with multiple grouped commands to client devices (Tasks can be dispatched to client devices for execution without network connection)
- Schedule, send and execute commands to multiple devices at same time
- Monitor task execution status and results
- Remotely login to client devices via VNC
- Integrated software solution to include all components from server to clients
- Watchdog to maximize software stability
- Microsoft® Active Directory® support for account management
- Privilege settings for accounts and roles, also for each command for every device group



• VESA mounting bracket included

• Stand included

